

GMS

Thermal Products Ltd

www.gmsthermal.co.uk



GMS BOILER SOLUTIONS CONDENSATE PUMPSETS

GMS CONDENSATE PUMPSETS

Introduction

By using the CPS condensate recovery system, the normally wasted energy in a steam system is recycled by recovering the condensate and returning back to the boiler hotwell feed tank. Not only does it save energy in heating new water, it also reduces the cost of chemical dosing as the recovered condensate has already been treated.

Design

By combining the CPS package with an Atlantic non-storage calorifier, both time & space can be saved with the complete design and supply of a combined package. The condensate receiver can be sized to suit any additional condensate recovery lines available.

The pumpset is available as a single pumpset or a twin pump unit. The pump(s) on the unit are sized at 100% of the duty, with a cascade operation (twin pump units) should the design duty be exceeded. The twin pump unit also incorporates an auto-changeover function.

The pumps used are multi-stage with a stainless steel body and can handle condensate up to 99°C.

The receiver can be manufactured from the following materials:

- √ Copper
- √ Galvanised Steel
- √ Stainless Steel AISI 304L
- √ Stainless Steel AISI 316L

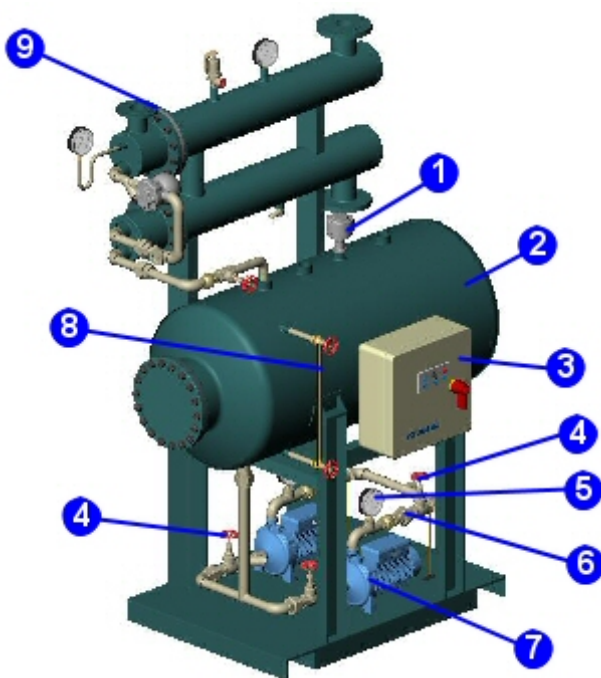
The pipework material is in an appropriate material and would be screwed or welded to suit site conditions.

Dependant on the size of the pumpset, the unit can be supplied in either 240v 1ph or 400v 3ph. The control panel has indicator lights for Power On, Pump Run/Trip, hand selector for Pump Action and Lead Pump Selector. Door interlocked isolator. The panel is supplied complete with volt free contacts for pump tripped and level alarms for connecting to the BMS.

Sizing

Draw a line vertically from your required flowrate and draw a line horizontally from the pump delivery head required. This will give the required model of unit for the given duties.

Once the correct model selection has been made, the required material selection should be made from the lists above. With this information, we can offer a competitive price for your condensate pumpset.



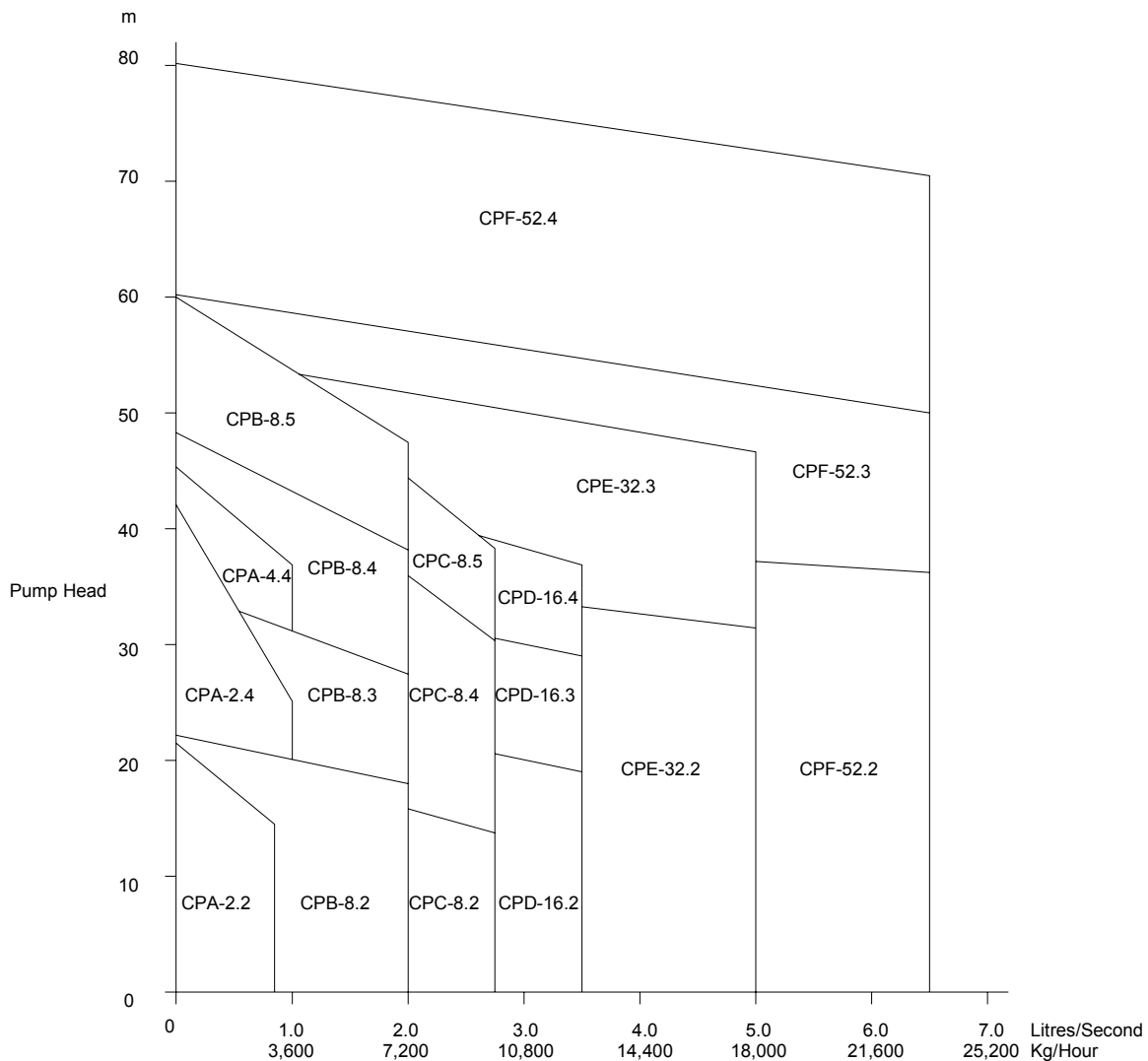
Pumpset Receiver Thermal Insulation Options

- √ **Type MA** Consists of 50mm mineral wool with dimpled aluminium cladding. This gives good thermal insulation and a quality finish.

For some installations there will be a high risk of damage to the factory fitted insulation. In these instances it is preferable to insulate on site.

- 1 Level Control Switch
- 2 Condensate Receiver Vessel
- 3 Electrical Control Panel
- 4 Pump Discharge Regulating Valve
- 5 Pump Discharge Pressure Gauge
- 6 Pump Discharge Check Valve
- 7 Pumps
- 8 Receiver Level Gauge
- 9 'ATC' Atlantic Heat Exchanger

GMS CONDENSATE PUMPSETS



Note: For larger duties not covered by our sizing chart, please contact our sales office.

CONNECTIONS (UNIT DETAILS ON PAGE 4)

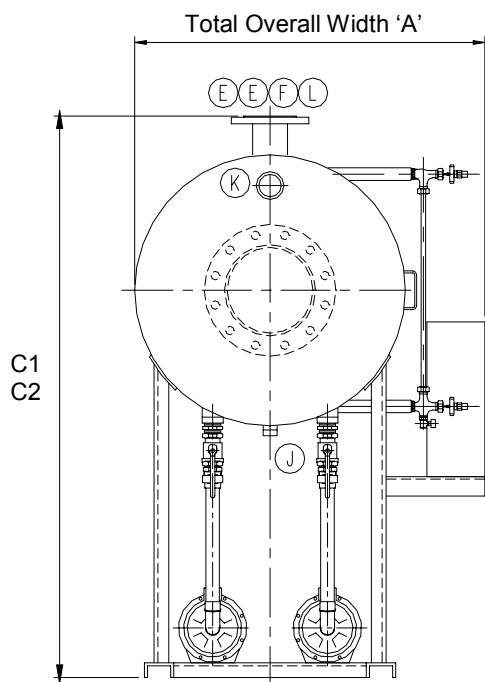
- E** Inlets
- F** Vent
- G** Inspection Opening
- H** Pumped Outlet
- J** Drain (3/4" BSP)
- K** Overflow (2" BSP)
- L** Level Switch

Details

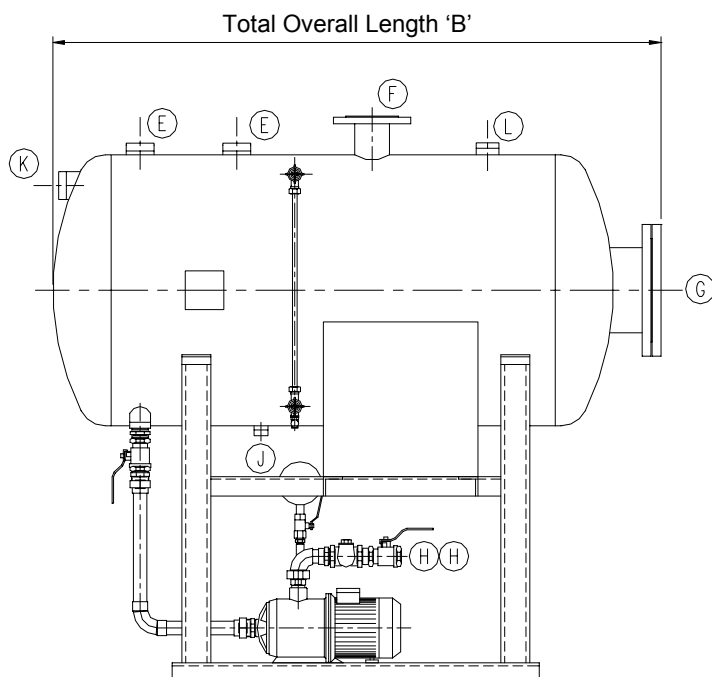
Flanged connections to BS EN1092-1:2002 PN16
Screwed connections to BS21

The dimensions shown are the maximum overall of the specified unit. Please contact our sales office with any enquiries with different dimensions to those shown.

GMS CONDENSATE PUMPSETS



Note:
C1 = Condensate at 90°C
C2 = Condensate at 98°C



Note: * - FLC = Full Load Current (Amps)
1 pp = Single Pump Unit
2 pp = Twin Pump Unit

Vessel Type	Dimensions in mm				Connections				Power V	FLC *	
	A	B	C1	C2	E	F	G	H		1 pp	2 pp
CPA-2.2	850	1330	1600	1700	2x1½" BSP	65mm	150mm	1" BSP	240/1	4.0	8.0
CPA-2.4	850	1330	1600	2050	2x1½" BSP	65mm	150mm	1" BSP	240/1	4.0	8.0
CPA-4.4	850	1330	1600	1550	2x1½" BSP	65mm	150mm	1" BSP	240/1	5.1	10.2
CPB-8.2	950	1530	1650	1800	2x2" BSP	100mm	200mm	1½" BSP	400/3	2.0	4.0
CPB-8.3	950	1530	1650	1800	2x2" BSP	100mm	200mm	1½" BSP	400/3	2.8	5.6
CPB-8.4	950	1530	1650	1800	2x2" BSP	100mm	200mm	1½" BSP	400/3	3.5	7.0
CPB-8.5	950	1530	1650	1800	2x2" BSP	100mm	200mm	1½" BSP	400/3	5.0	9.9
CPC-8.2	1050	1530	1700	2050	2x2" BSP	100mm	200mm	2" BSP	400/3	2.0	4.0
CPC-8.4	1050	1530	1700	2050	2x2" BSP	100mm	200mm	2" BSP	400/3	3.5	7.0
CPC-8.5	1050	1530	1700	2050	2x2" BSP	100mm	200mm	2" BSP	400/3	5.0	9.9
CPD-16.2	1150	1230	1750	2600	2x3" BSP	125mm	300mm	2" BSP	400/3	3.8	7.6
CPD-16.3	1150	1230	1750	2600	2x3" BSP	125mm	300mm	2" BSP	400/3	5.0	9.9
CPD-16.4	1150	1230	1750	2600	2x3" BSP	125mm	300mm	2" BSP	400/3	5.9	11.7
CPE-32.2	1150	1930	2600	2600	2x3" BSP	150mm	300mm	2½" BSP	400/3	8.4	16.8
CPE-32.3	1150	1930	2600	2600	2x3" BSP	150mm	300mm	2½" BSP	400/3	10.8	21.6
CPE-52.2	1250	1930	2650	2650	3x3" BSP	150mm	300mm	2½" BSP	400/3	10.5	21.0
CPF-52.3	1250	1930	2650	2650	3x3" BSP	150mm	300mm	2½" BSP	400/3	14.3	28.6
CPF-52.4	1250	1930	2650	2650	3x3" BSP	150mm	300mm	2½" BSP	400/3	21.0	42.0

Please note all information shown within this leaflet is subject to change without prior notice.